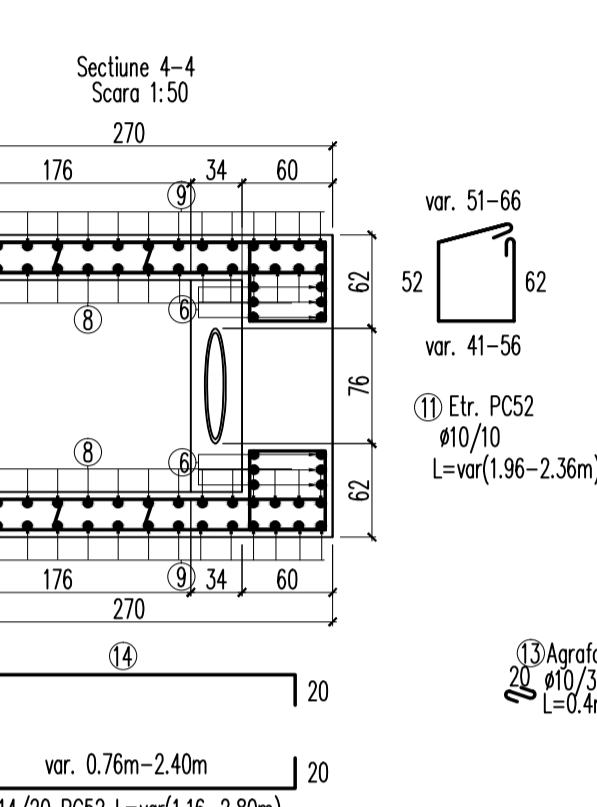
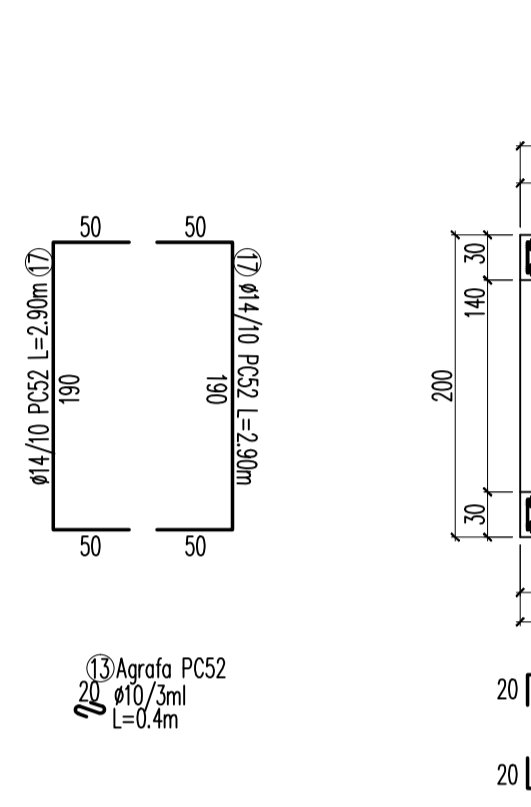
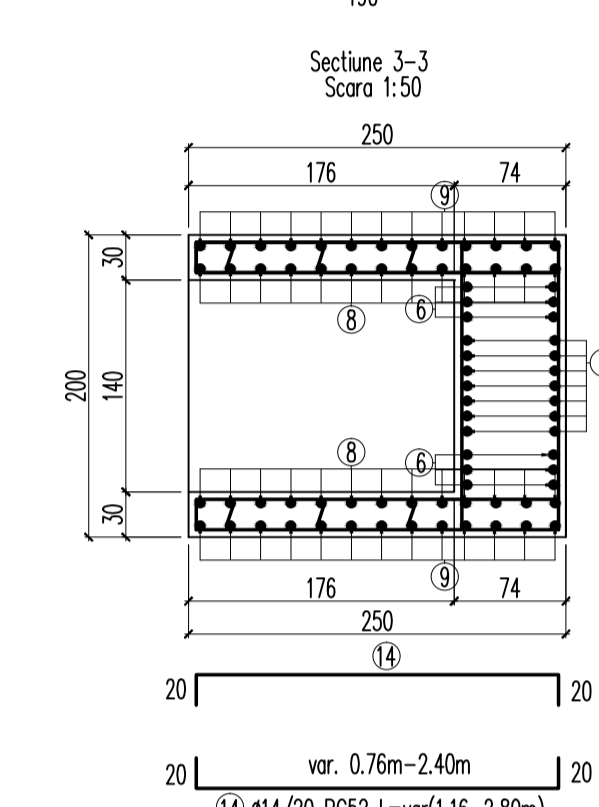
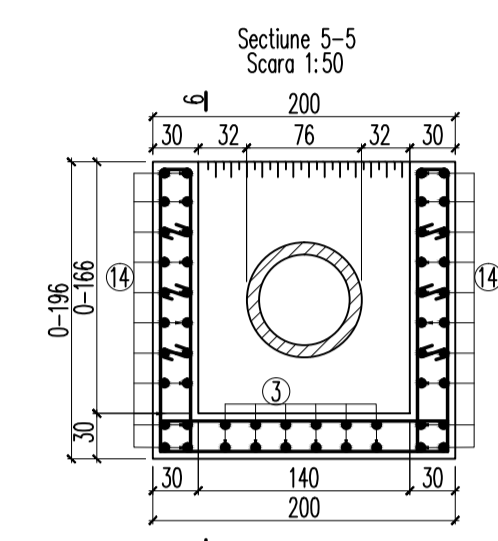
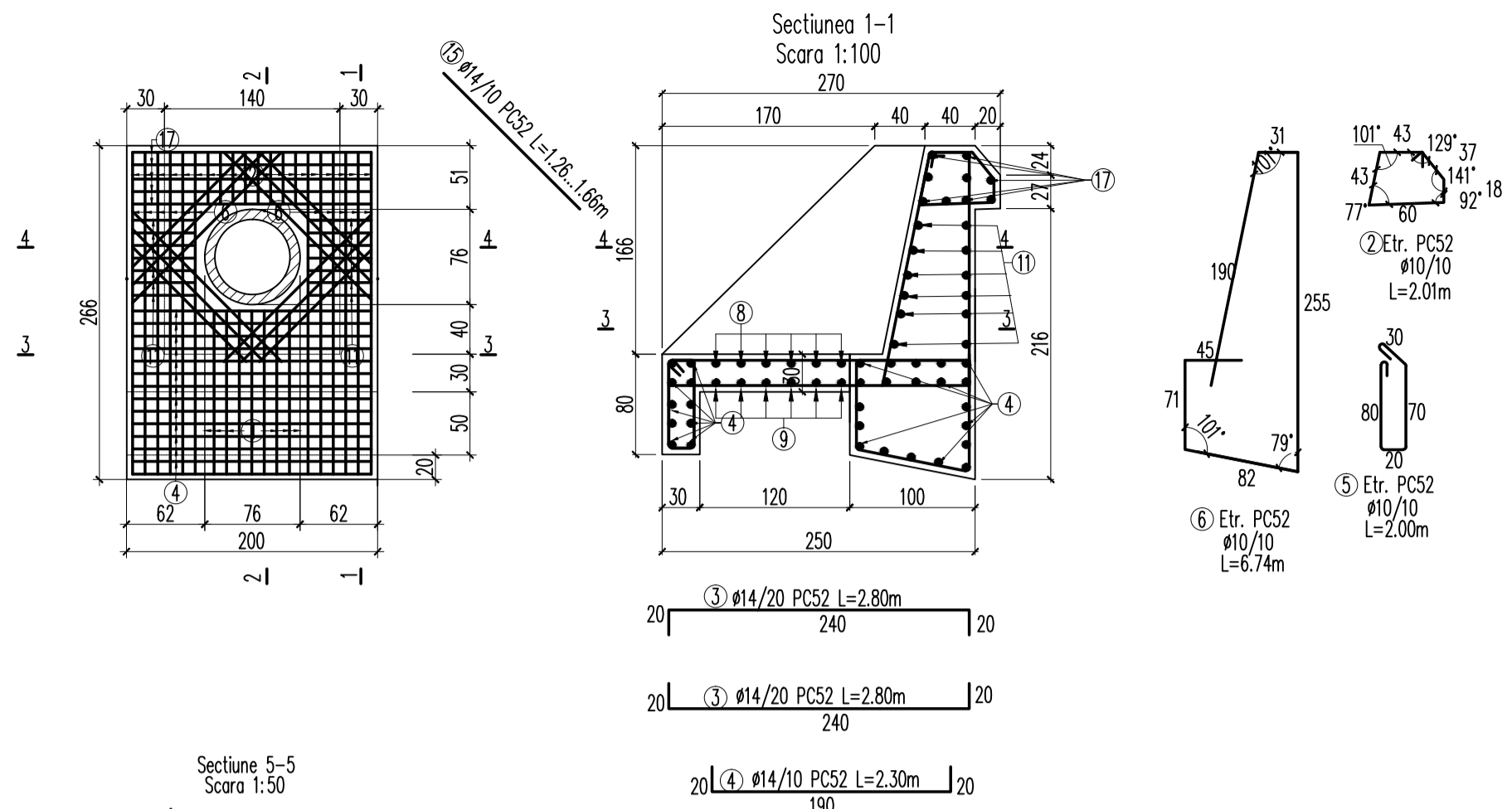


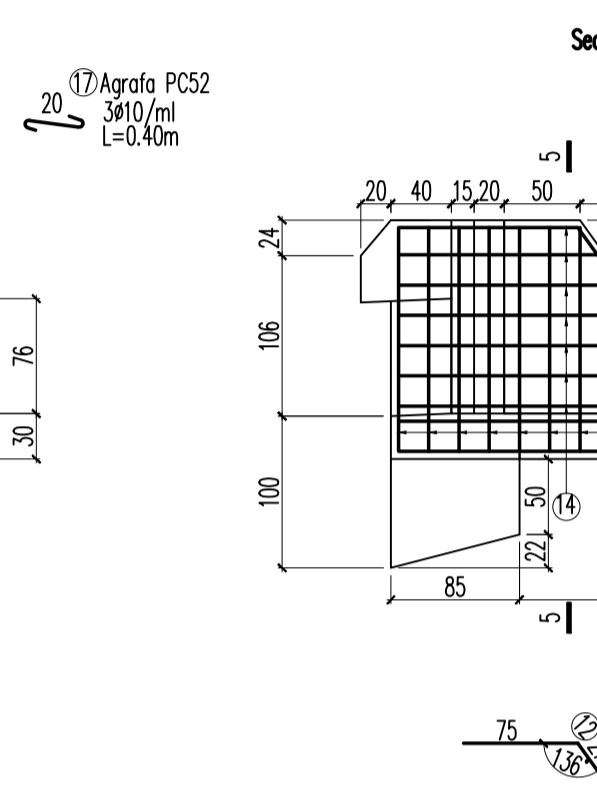
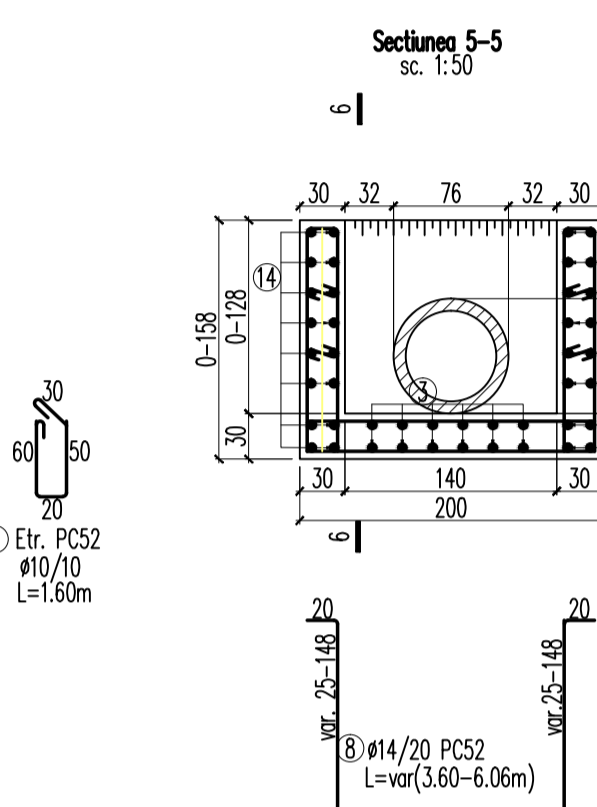
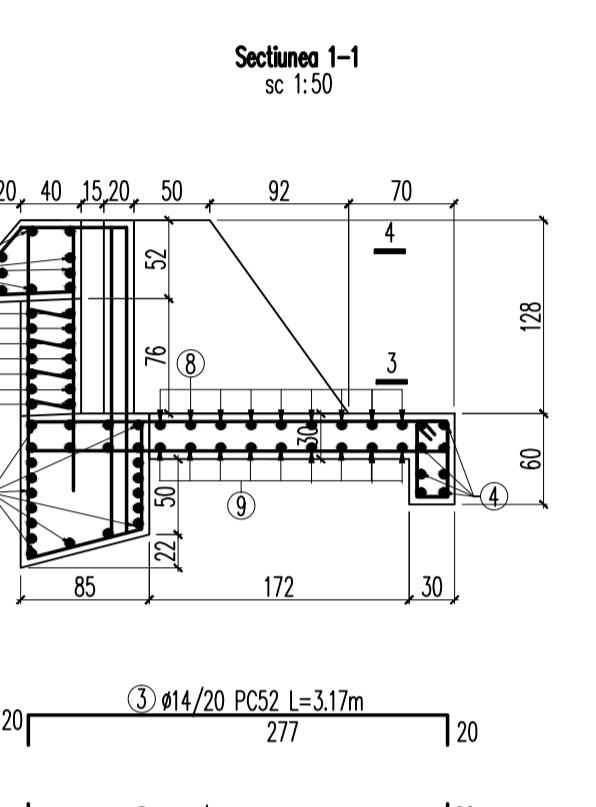
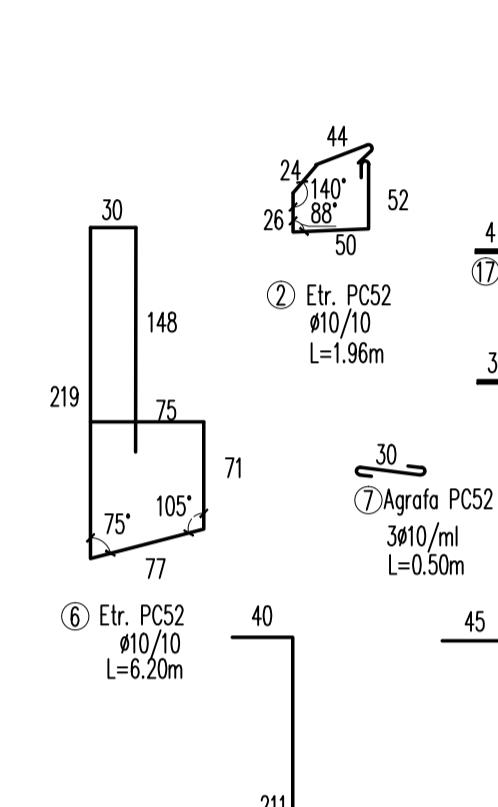
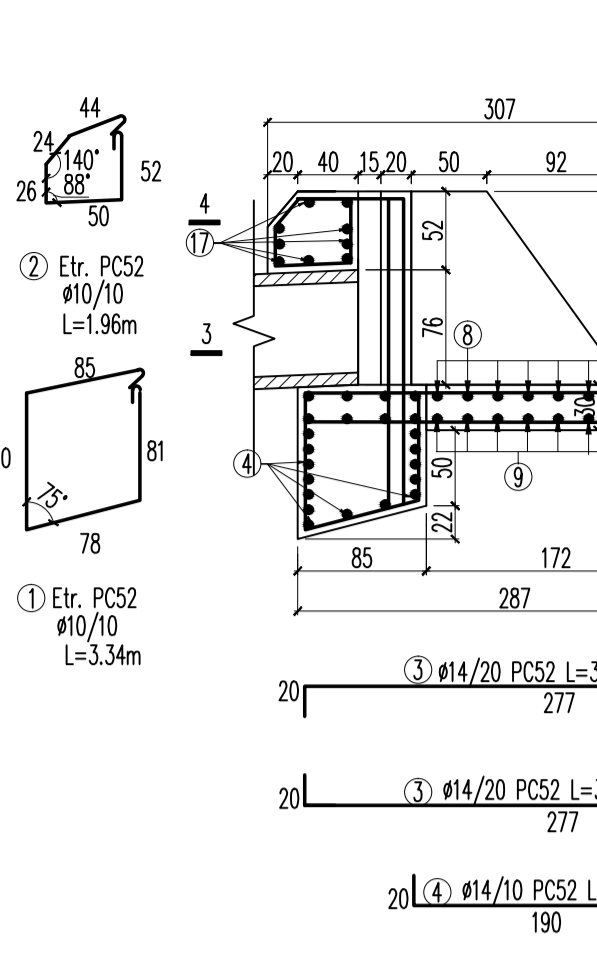
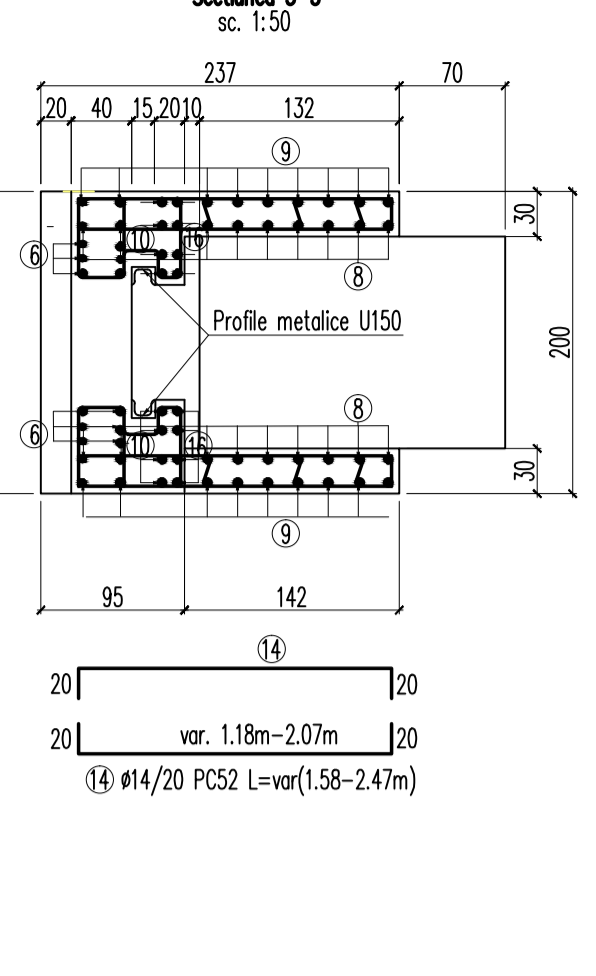
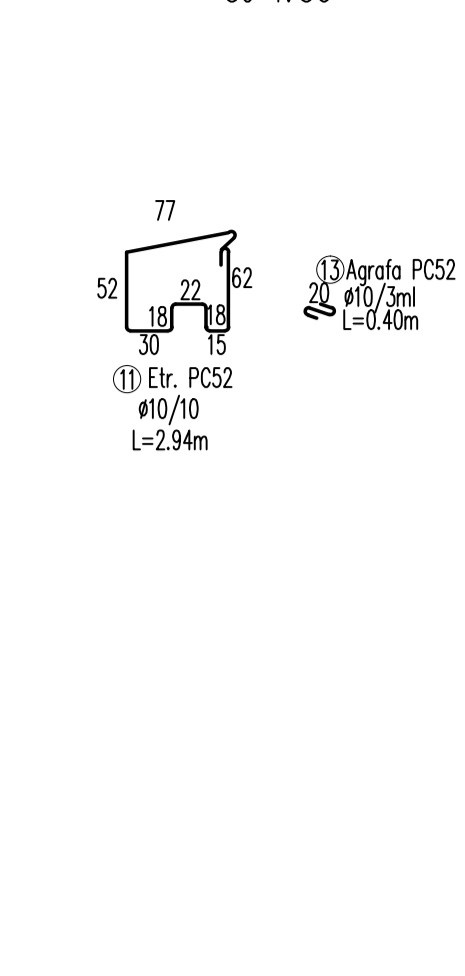
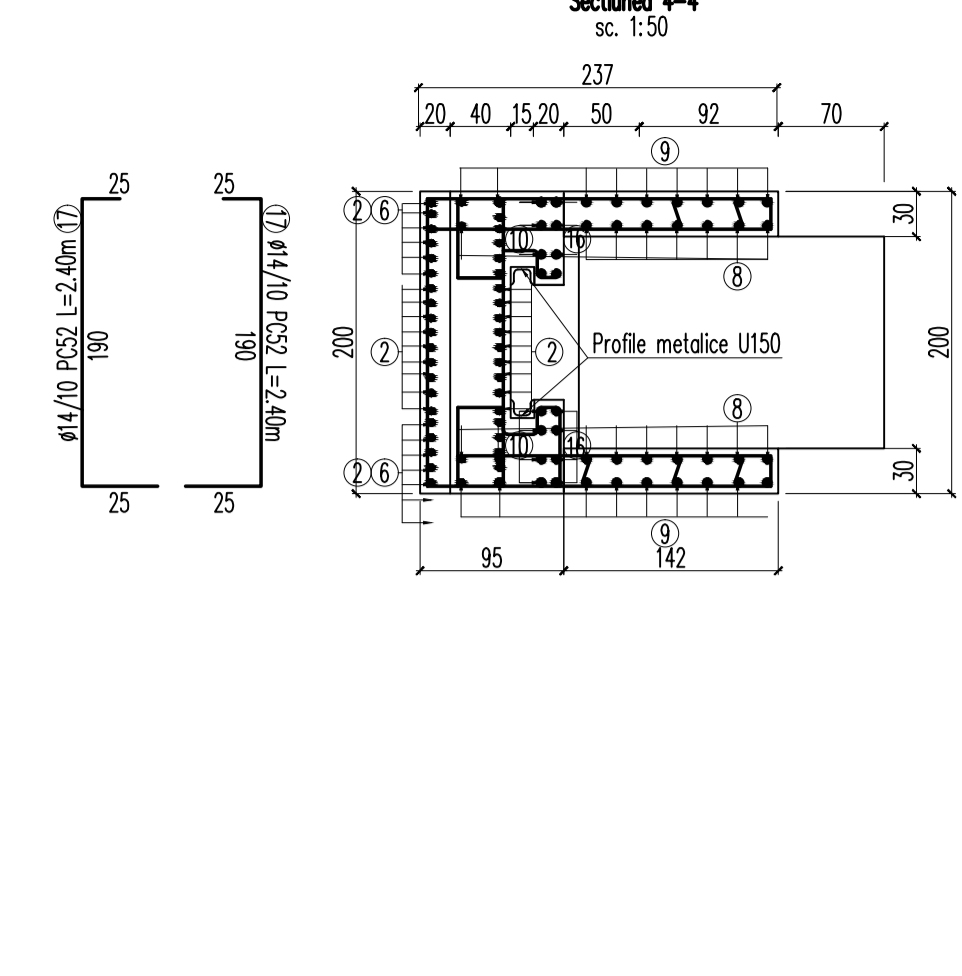
Armare timpan oval  
sc. 1:50



Extras de armatura									
Elementul	Denumire	nr. buc.	Marca	Diam. $\phi$ (mm)	Lungimi pe buc. (m)	Nr. buc. pe elem.	toate elem.	Lungimi pe $\phi$ (m)	
Extras armatura Timpan oval	1	10		10	4.42	8	35.36	10	
	2	10		10	2.10	20	42.00	14	
	3	14		14	2.80	12	33.60		
	4	10		10	2.30	32	73.60		
	5	10		10	2.00	20	40.00		
	6	10		10	6.74	12	80.88		
	8	14		14	3.60-6.86	13	67.99		
	9	14		14	2.80-6.02	13	57.33		
	11	10		10	1.69-2.36	14	28.35		
	12	14		14	3.30	2	6.60		
	13	10		10	0.4	66	26.40		
	14	10		10	1.16-2.80	36	71.28		
	15	14		14	1.26-1.66	24	35.04		
	17	14		14	2.90	10	29.00		
	Total lungimi pe diametre						(m)	397.87	226.66
	Masa pe metru						(kg/m)	0.617	1.21
	Masa pe diametru						(kg)	246	275
Masa totala pe marca de otel						(kg)	521		

**Materiale:**  
 Beton : C25/30-P8-T3/14-III-S32.5/0-16  
 C6/7.5-S3-B8-III-S32.5/0-32-X0  
 Otel beton: PCS2

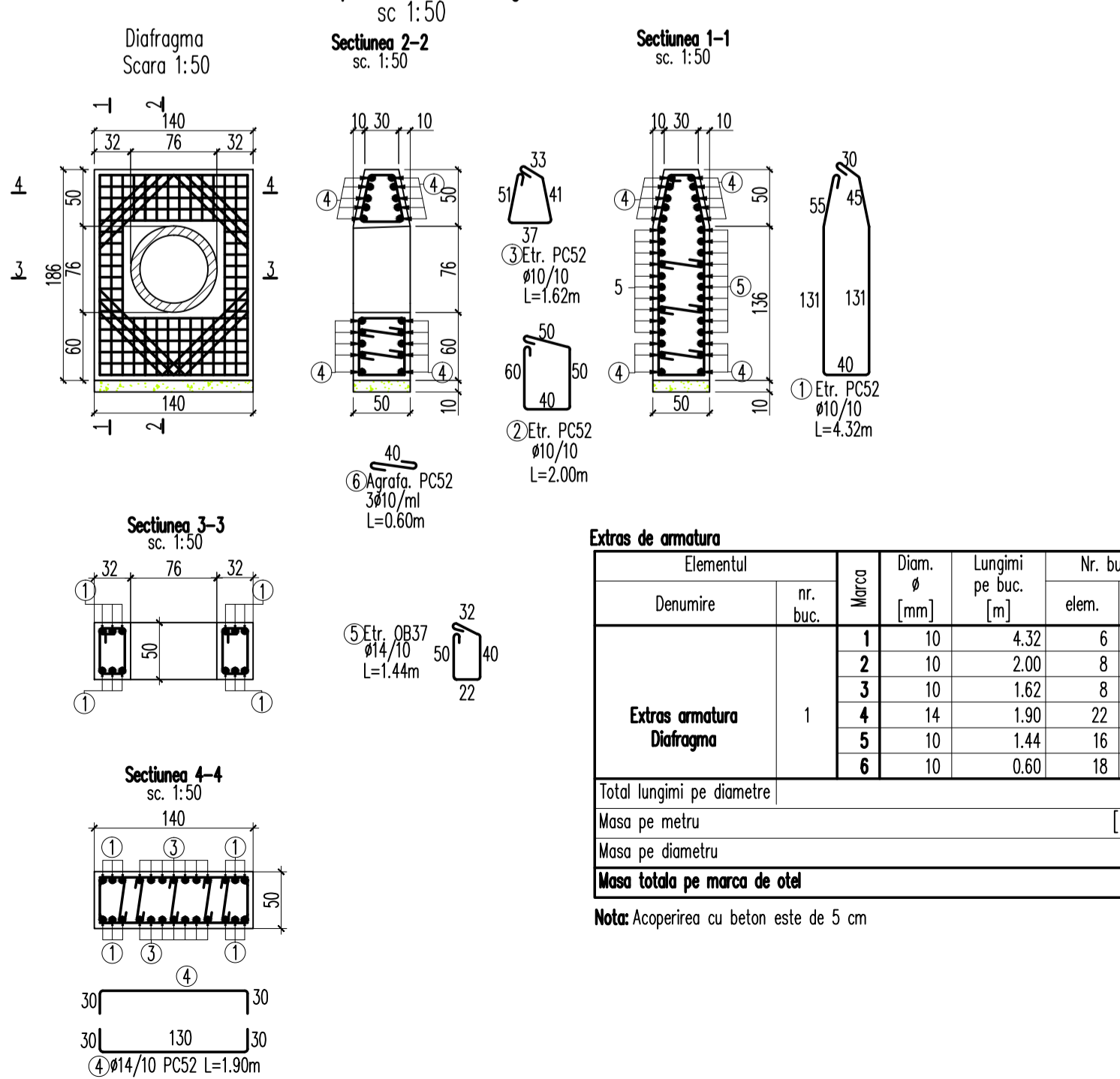
Armare timpan amonte  
sc. 1:50



Extras de armatura								
Elementul	Denumire	nr. buc.	Marca	Diam. $\phi$ (mm)	Lungimi pe buc. (m)	Nr. buc. pe elem.	toate elem.	Lungimi pe $\phi$ (m)
Extras armatura Timpan amonte	1	10		10	3.34	8	26.72	10
	2	10		10	1.96	20	39.20	14
	3	14		14	3.17	12	38.04	
	4	10		10	2.30	32	73.60	
	5	10		10	1.60	20	32.00	
	6	10		10	6.20	12	74.40	
	7	10		10	0.50	8	4.00	
	8	14		14	3.60-6.06	12	57.96	
	9	14		14	2.80-5.26	12	48.36	
	10	10		10	2.76	8	22.08	
	11	10		10	2.94	14	41.16	
	12	14		14	2.51	2	5.02	
	13	10		10	0.4	66	26.40	
	14	10		10	1.58-2.47	32	64.80	
	15	14		14	1.26-1.66	24	35.04	
	16	10		10	2.86	8	22.88	
	17	14		14	2.40	10	24.00	
Total lungimi pe diametre						(m)	427.24	208.42
Masa pe metru						(kg/m)	0.617	1.21
Masa pe diametru						(kg)	264	253
Masa totala pe marca de otel						(kg)	517	

**Materiale:**  
 Beton : C25/30-P8-T3/14-III-S32.5/0-16  
 C6/7.5-S3-B8-III-S32.5/0-32-X0  
 Otel beton: PCS2  
 5cm Acoperire cu beton armatut

Sectiuni tip - Armare diafragme  
sc. 1:50



**Materiale:**  
 Beton : C25/30-P8-T3/14-III-S32.5/0-16  
 C6/7.5-S3-B8-III-S32.5/0-32-X0  
 Otel beton: PCS2

Extras de armatura								
Elementul	Denumire	nr. buc.	Marca	Diam. $\phi$ (mm)	Lungimi pe buc. (m)	Nr. buc. pe elem.	toate elem.	Lungimi pe $\phi$ (m)
Extras armatura Diafragma	1	10		10	4.32	6	25.92	10
	2	10		10	2.00	8	16.00	14
	3	10		10	1.62	8	12.96	
	4	14		14	1.90	22	41.80	
	5	10		10	1.44	16	23.04	
	6	10		10	0.60	18	10.80	
Total lungimi pe diametre						(m)	65.68	64.84
Masa pe metru						(kg/m)	0.617	1.21
Masa pe diametru						(kg)	41	79
Masa totala pe marca de otel						(kg)	120	

Nota: Acoperirea cu beton este de 5 cm

Acest document este proprietatea firmei s.c. AQUA PROVIC PROIECT s.r.l. si nu poate fi folosit, transmis sau reprodus, total sau partial, fara autorizarea expresa si scrisa; utilizarea sa trebuie sa fie conforma celei pentru care a fost elaborat. Documentul este valabil numai cu semnatura si stampila in original.

s.c. AQUA PROVIC PROIECT s.r.l. PROIECTARE SI STUDII str. Septimiu Albini nr.118, Cluj-Napoca	Scara 1:50	Beneficiar: Adminstratia Bazinala de Apo Banat Investitie: "Aparare impotriva inundatiilor a municipiului Caransebes, zona Aeropart, zona Caransebesul Nou, jud. Caras-Severin"	Proiect nr. 942/2020 Faza P.T.+D.E.
Proiectat ing. Heda STOICESCU	Data 2021	Subtraversare dig DN600 -Armare subtraversare DN600-	Plansa nr. 3.4.9
Desenat ing. Heda STOICESCU			
Verificat ing. Dragos GROS			
Sef proiect ing. Dan SACUI			